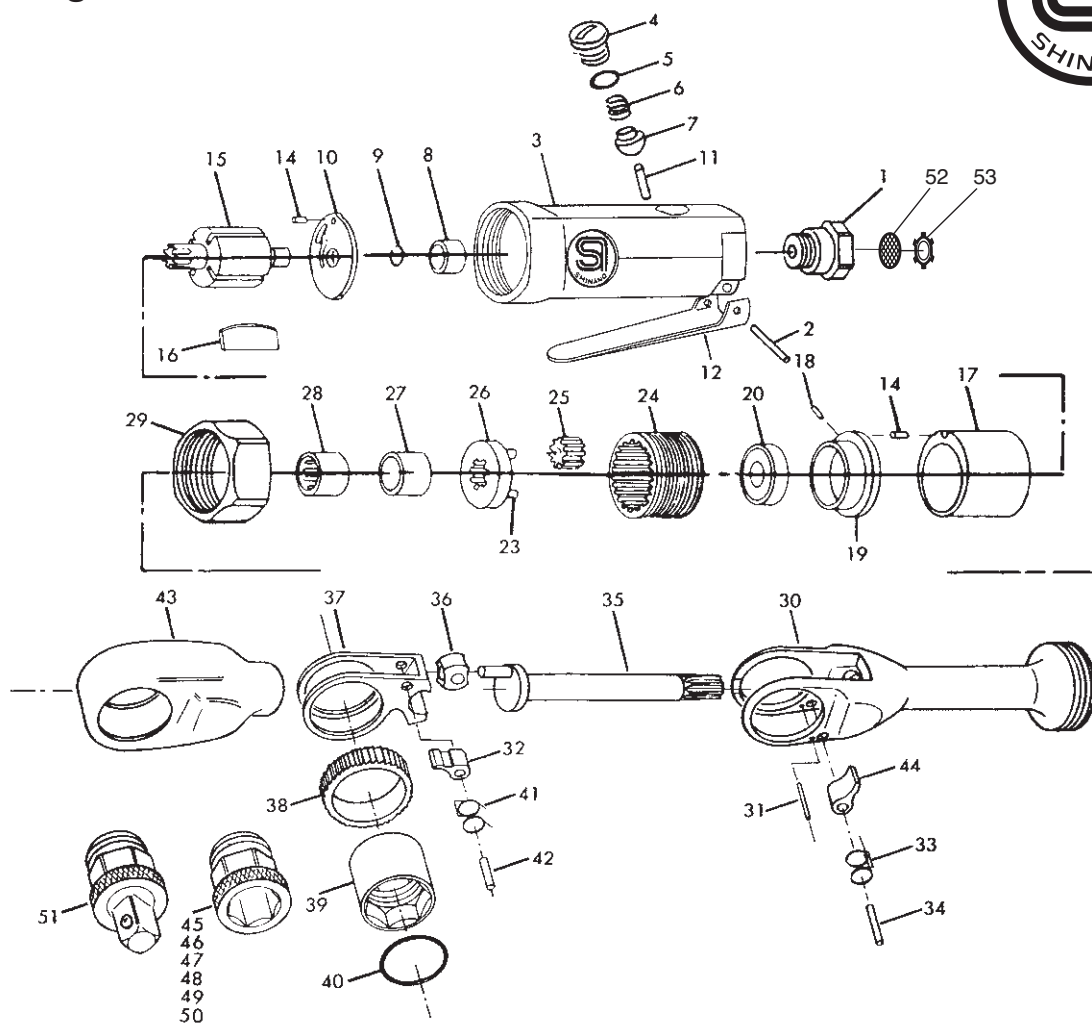


# SI-1288

## Through Ratchet Wrench



Ref. No.	Parts No.	Description	Q'ty	Ref. No.	Parts No.	Description	Q'ty
1	310-2S	Inlet Bushing	1	29	310-22	Lock Ring (Chromium Plated)	1
2	30-24	Roll Pin (3ø-24mm)	1	30	313-10A	Ratchet Housing	1
3	310-7S	Motor Housing incl. Bush (310-1S)	1	31	15-18	Roll Pin (1.5ø-18mm)	1
4	800-14	Valve Screw	1	32	313-5	Ratchet Pawl	1
5	P-9	O-Ring	1	33	313-7	Ratchet Spring (B)	1
6	670-49	Valve Spring	1	34	313-18A	Ratchet Pin (A)	1
7	300-10	Valve	1	35	313-15	Crank Shaft	1
8	KE-45	Needle Bearing	1	36	310-8	Drive Bushing	1
9	JS-6.35	Retaining Ring	1	37	313-4	Drive Yoke	1
10	310-4	Rear Plate	1	38	313-1	Ratchet Ring	1
11	310-4S	Valve Pin	1	39	313-2	Ratchet Bush	1
12	350-2	Throttle Lever	1	40	313-3	Socket Retainer Ring	1
14	25-4	Roll Pin (2.5ø-4mm)	2	41	313-6	Ratchet Spring (A)	1
15	310-11	Rotor	1	42	313-9	Ratchet Pin (B)	1
16	330-16	Rotor Blade	4	43	313-19	Boot	1
17	330-17	Cylinder	1	44	313-5A	Ratchet Pawl A	1
18	15-6	Roll Plate (1.5ø-6mm)	1	45	313-23	8mm Socket Wrench	1
19	310-5	Front Plate	1	46	313-14	10mm Socket Wrench	1
20	608ZZ	Ball Bearing	1	47	313-24	11mm Socket Wrench	1
23	310-19	Planet Pin	3	48	313-13	12mm Socket Wrench	1
24	310-21	Internal Gear	1	49	313-25	13mm Socket Wrench	1
25	310-12	Planet Gear	3	50	313-12	14mm Socket Wrench	1
26	310-2	Planet Cage incl. Planet Pins (310-19x3)	1	51	313-16	3/8" Sq. Adaptor	1
27	310-38	Bush	1	52	680-28A	Screen	1
28	HK0910	Needle Bearing	1	53	CRTW-12	Retainer	1