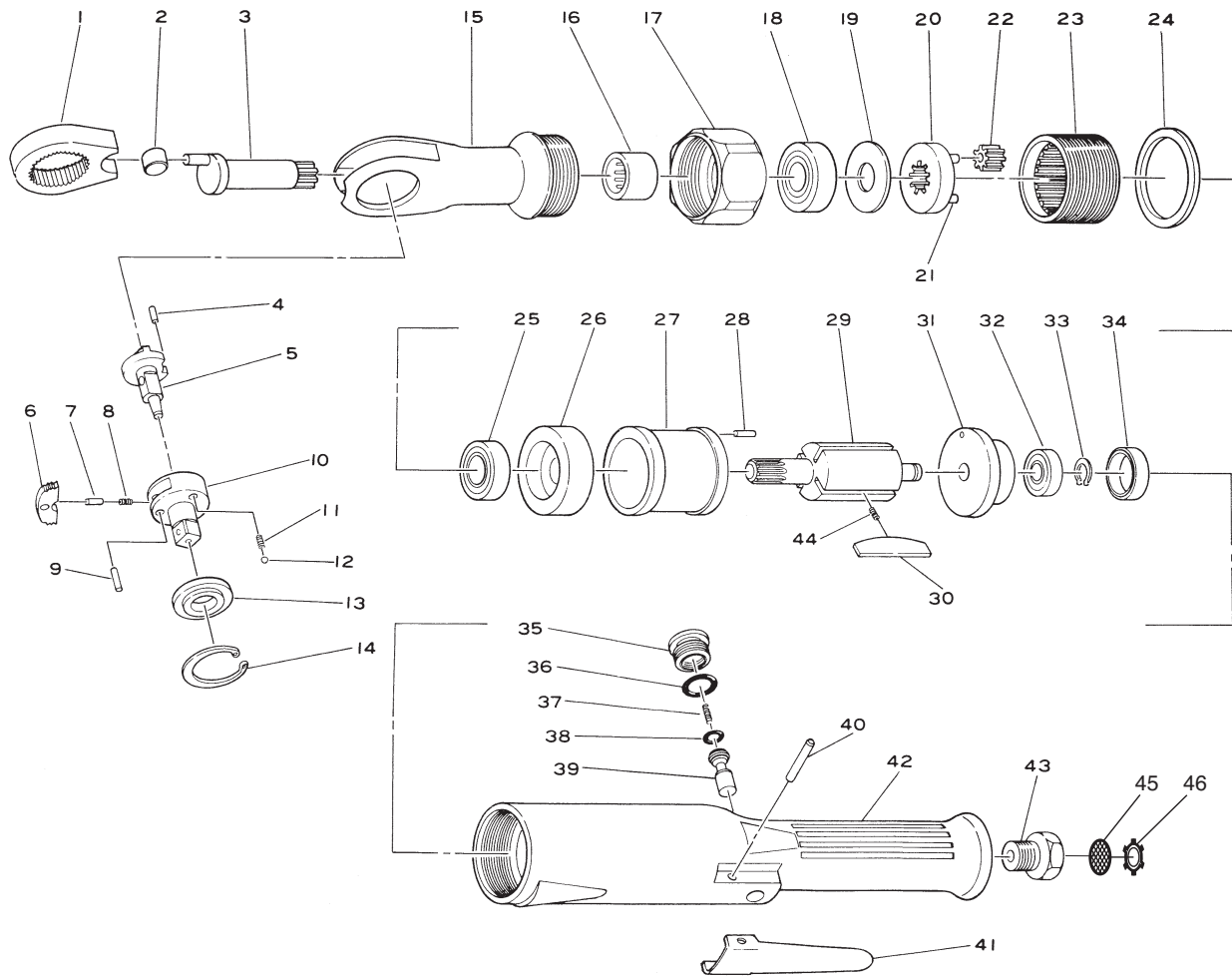


# SI-1435

## 1/2" Sq. Dr. Ratchet Wrench



Ref. No.	Parts No.	Description	Q'ty	Ref. No.	Parts No.	Description	Q'ty
1	230-25	Yoke	1	24	230-15	Lock Washer	1
2	230-24	Drive Bushing	1	25	6000ZZ	Ball Bearing	1
3	230-23	Crank Shaft	1	26	230-14	Front Plate	1
4	25-5	Roll Pin (2.5ø-5mm)	1	27	230-11A	Cylinder	1
5	230-26	Reverse Lever	1	28	30-5	Roll Pin (3ø-5mm)	1
6	230-29	Ratchet Pawl	1	29	230-13	Rotor	1
7	230-30	Reverse Pin	1	30	230-12	Rotor Blade	4
8	230-32	Reverse Spring	1	31	230-10	Rear Plate	1
9	230-31	Dowel Pin	1	32	608ZZ	Ball Bearing	1
10	230-33	1/2" Sq. Anvil	1	33	JS-8	Retaining Ring	1
11	230-28	Thrust Washer Spring	2	34	650-43	Bearing Cap	1
12	SB-50	Steel Ball	2	35	230-68	Valve Screw	1
13	230-27	Thrust Washer	1	36	P-10	O-Ring	1
14	JO-36	Retaining Ring	1	37	230-4	Valve Spring	1
15	230-22	Ratchet Housing	1	38	P-6	O-Ring	1
16	HK1616	Needle Bearing	1	39	230-6	Valve Stem	1
17	230-21	Lock Ring	1	40	30-24	Roll Pin (3ø-24mm)	1
18	6200	Ball Bearing	1	41	350-2	Throttle Lever	1
19	230-20	Washer	1	42	230-2	Motor Housing incl. Bush (230-7)	1
※ 20	230-19	Planet Cage	1	43	510-16	Inlet Bushing incl. Screen (680-28A) & Retainer (CRTW-12)	1
21	230-18	Pin	3	44	230-34A	Blade Spring	2
22	230-17	Planet Gear	3	45	680-28A	Screen	1
23	230-16	Internal Gear	1	46	CRTW-12	Retainer	1